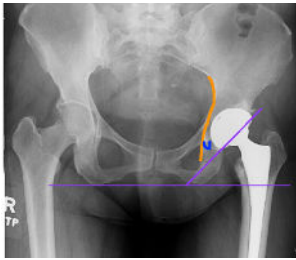


## 1. Plan



**1A.** Plan cup and stem position using standard templating techniques. (No pre-op CT required.)



**1B.** Input desired cup inclination and version targets to the navigation unit.

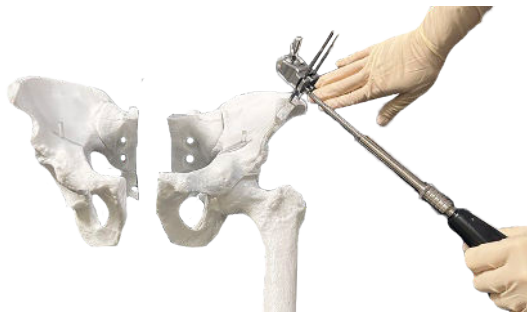
## 2. Quick-Registration with patient setup



**2A.** Attach thigh plate to thigh using loban™ (or similar) and place magnetic target on thigh plate.



**2B.** Insert two pins in the iliac crest. The most anterior pin should be placed 2 finger breadths (approx. 2-4 cm) posterior to the ASIS.



**2C.** Attach pelvic base to pins by using the driver to tighten the bottom two screws.

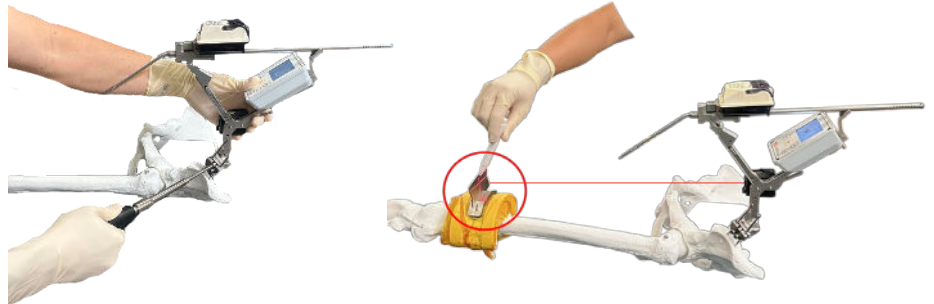


**2D.** Place tack in greater trochanter, in hard bone and out of the way of stem prep.

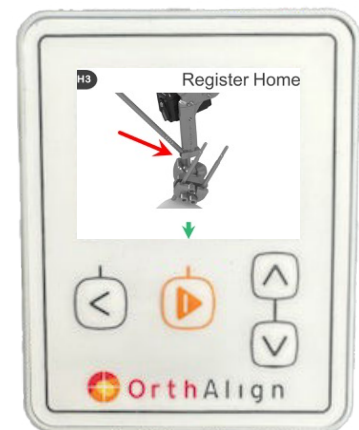
## 2. Quick-Registration with patient setup *(continued)*

**2E.** Place pelvic bracket assembly on pelvic base, ensuring laser is aimed at target. Then, secure the assembly by using the driver to tighten the top screw.

**Note:** Use a marking pen to mark the laser “+” placement on the target plate.



**2F.** Register “Home” point on pelvic base.



**2G.** Register tack.



## 2. Quick-Registration with patient setup *(continued)*

### 2H. Register coronal plane.

Align probe parallel to the table, pointing towards the operative foot.



### 2I. Register Anterior Pelvic Plane (APP).



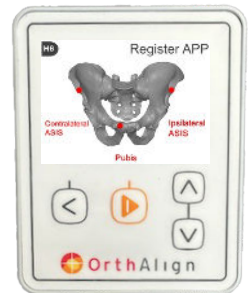
1. Ipsilateral ASIS.



2. Contralateral ASIS.



3. Pubis.



### 2J. Remove the pelvic bracket assembly and target, and then continue with acetabular bone preparation.



## 3. OrthAlign Trial-Assist - cup placement



**3A.** After assembling the bracket assembly on the back table, attach it to the pelvic base.



**3B.** Preliminarily position cup impactor.

**Note:** Ensure the implant-specific adapter is attached to the cup impactor, with the arrow pointing towards the cup.



**3C.** Press orange "Home" button to advance screens and wait for the "green light" to appear.



**3D.** Once the "green light" appears, transfer the sensor from the assembly onto the cup impactor, and view live abduction and anteversion on the screen. Set cup position.



**3E.** Prior to cup impaction, remove sensor from cup impactor and remove bracket from pelvic base. Repeat as many times as desired.



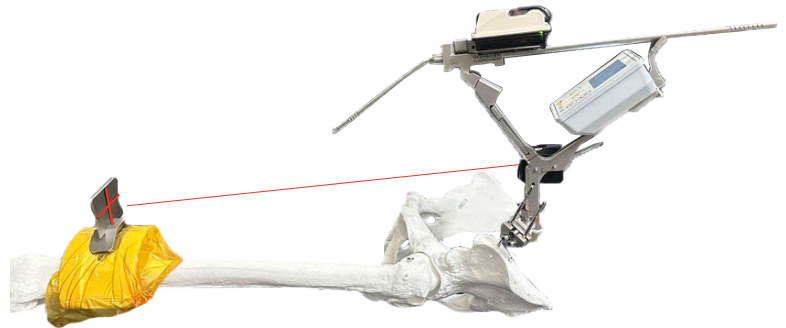
**3F.** Remove bracket from pelvic base, and proceed with femoral bone preparation.

## 4. OrthAlign Trial-Assist - leg length and offset

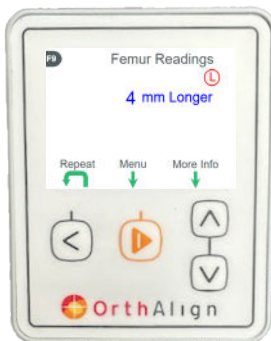
**4A.** After preparing pelvic bracket assembly on the back table, attach assembly to pelvic base.

Attach target to thigh plate.

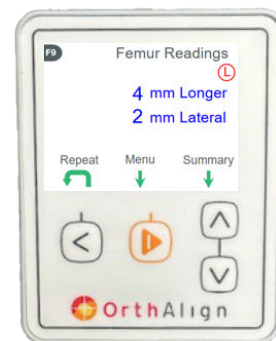
Ensure patient position is the same as initial registration by confirming laser is lined up with the target.



**4B.** Register tack.



**4C.** Leg length displayed.



**4D.** Press "More Info" to display offset.

Please refer to the HipAlign Supine Surgical Technique Manual (PN 001249) for full technique.