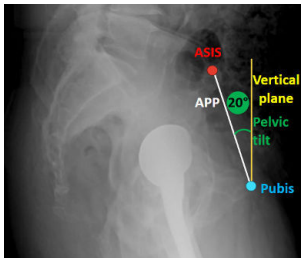


Pelvic tilt calculation

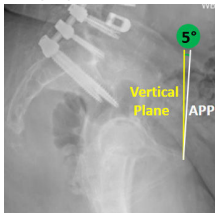


Standing lateral x-ray

1. Identify the **ASIS**
2. Identify the **pubis**
3. Draw the **vertical plane**
4. Draw the **anterior pelvic plane (APP)** - connect ASIS and pubis
5. Measure **pelvic tilt** - the angle between the APP and vertical line
6. Input **pelvic tilt** into Lantern Hip

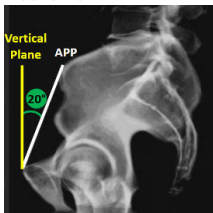
Pelvic tilt input

Anterior tilt



Lantern Hip case setup:
5° standing pelvic tilt
Select anterior

Posterior tilt



Lantern Hip case setup:
20° standing pelvic tilt
Select posterior